

SIREDO Course on AYA Sarcoma

From Biology to the Clinic
January 15-18, 2019 - Institut Curie

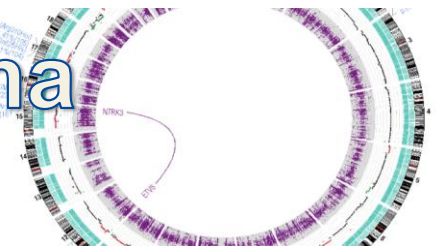


Tuesday, January 15: Biology & Pathology of Sarcomas

09:00 09:30	Olivier DELATTRE & Valérie LAURENCE Institut Curie, Paris - FR	Welcome, introduction and training information	Amphithéâtre BDD 11-13 rue Pierre & Marie Curie 75005 Paris
09:30 10:30	François LE LOARER Institut Bergonié - FR	Pathological Classification and RRePS (45min talk + 15 min discussion)	
10:30 11:15	Laurence BRUGIERES Institut Gustave Roussy - FR	Genetic Predisposition to sarcoma (30min talk + 15 min discussion)	
11:15 11:45	Isabelle AERTS-GAJDOS Institut Curie - FR	Secondary sarcomas in retinoblastoma genetic predisposition: how can they be managed? (20min talk + 10 min discussion)	
11:45 13:00	LUNCH BREAK		
13:00 14:00	Marc LADANYI Memorial Sloan Kettering Cancer Center - US	Genomic landscape and clinical genomics of sarcomas (45min talk + 15 min discussion)	Amphithéâtre BDD
14:00 14:45	Jean-Yves BLAY Centre Léon Bérard - FR	The French network for STS (Netsarc) and bone sarcoma (Resos) and European networks (Euracan...) (30min talk + 15 min discussion)	
14:45 15:15	COFFEE BREAK		BDD Hall
15:15 17:15	Coordination: Didier SURDEZ & Julien VIBERT	Short talks	Amphithéâtre BDD

SIREDO Course on AYA Sarcoma

From Biology to the Clinic
January 15-18, 2019 - Institut Curie



Wednesday, January 16: Soft Tissue Sarcomas

09:00 10:00	Cristina R. ANTONESCU Memorial Sloane Kettering Cancer Center - USA	New molecular entities in sarcomas (45min talk + 15 min discussion)	Amphithéâtre BDD 11-13 rue Pierre & Marie Curie 75005 Paris
10:00 10:30	Edmund CHEESMAN Central Manchester University Hospitals NHS - UK	Diagnosis and subtyping of STS in children , adolescents, and young adults. (20min talk + 10 min discussion)	
10:30 11:00	Hervé BRISSE Institut Curie - FR	Image-guided soft tissue tumor needle biopsy : why? when? how? (20min talk + 10 min discussion)	
11:00 11:15	COFFEE BREAK		BDD Hall
11:15 11:45	Nina JEHANNO Institut Curie - FR	Imaging of Sarcoma : PET / CT guided strategy (20min talk + 15 min discussion)	Amphithéâtre BDD
11:45 12:15	Frédéric CHIBON CRCT - FR	Prognosis signature in STS (20min talk + 10 min discussion)	
12:15 12:45	Michèle KIND Institut Bergonié - FR	New approaches for imaging STS (20min talk + 10 min discussion)	
12:45 13:45	LUNCH BREAK		Green Café
13:45 14:30	Axel LE CESNE Institut Gustave Roussy - FR	Current treatments and perspectives in advanced STS (30min talk + 15 min discussion)	Amphithéâtre BDD
14:30 15:15	Daniel ORBACH Institut Curie - FR	Non-RMS STS in AYA: EPSSG experience (30min talk + 15 min discussion)	
15:15 15:45	Andrea FERRARI Fondazione IRCCS Istituto Nazionale dei Tumori, Milano-IT	RMS in AYA: pediatric or adult strategy? (20min talk + 10 min discussion)	
15:45 16:00	COFFEE BREAK		BDD Hall
16:00 16:45	Coordination: Sarah WATSON	Interactive session in preparation of the next day topic: Biology of Sarcoma. (Results and papers discussion).	Amphithéâtre BDD
16:45 17:30	Sylvie BONVALOT Institut Curie - FR	Desmoids in AYA (30min talk + 15 min discussion)	

SIREDO Course on AYA Sarcoma

From Biology to the Clinic
January 15-18, 2019 - Institut Curie



PSL



Thursday, January 17: Bone Sarcomas

09:00 09:45	Frédérique LAROUSSERIE Hôpital Cochin - FR	Pathologic and molecular classification of bone sarcoma (30min talk + 15min discussion)	Amphithéâtre BDD 11-13 rue Pierre & Marie Curie 75005 Paris
09:45 10:20	Gaëlle PIERRON Institut Curie - FR	Analysis of tumor-specific genetic alteration in a clinical context (25min talk + 10 min discussion)	
10:20 11:05	Line CLAUDE Léon Bérard - FR	Radiotherapy in young sarcoma patients: which specificities? (30min talk + 15 min discussion)	
11:05 11:30	COFFEE BREAK		BDD Hall
11:30 12:00	Françoise REDINI Université de Nantes - FR	Biology of bone sarcomas (20min talk + 10 min discussion)	Amphithéâtre BDD
12:00 12:20	Valérie LAURENCE Institut Curie - FR	AYA with Sarcoma: where should they be treated (15min talk + 5 min discussion)	
12:20 12:40	Sue MORGAN NHS - UK	Psychosocial support for AYA with sarcomas (15min talk + 5 min discussion)	
12:40 13:00	Estelle LECOINTE sarcomes.org	Patients association (15min talk + 5 min discussion)	
13:00 13:20	Fabrizia STAVRU Institut Pasteur - FR	Liposarcoma: a patient's experience (15min talk + 5 min discussion)	
13:20 14:30	LUNCH BREAK		BDD Hall
14:30 15:15	Nathalie GASPAR Institut Gustave Roussy - FR	How to improve AYA access to new drugs and to clinical trials? (30min talk + 15 min discussion)	Amphithéâtre BDD
15:15 16:00	Sophie PIPERNO-NEUMANN Institut Curie - FR	Improvement and future directions in the treatment of osteosarcomas (30min talk + 15 min discussion)	
16:00 16:15	COFFEE BREAK		BDD Hall
16:15 17:00	François GOUIN CHU de Nantes - FR	Long-term follow-up following musculo-skeletal reconstruction after tumor resection (30min talk + 15 min discussion)	Amphithéâtre BDD
17:00 17:45	Interactive Quizz		

SIREDO Course on AYA Sarcoma

From Biology to the Clinic

January 15-18, 2019 - Institut Curie



Friday, January 18: Biology of Sarcomas

09:00 09:30	Olivier DELATTRE Institut Curie - FR	Biology of Ewing tumors (20 min talk + 10 min discussion)	Amphithéâtre BDD 11-13 rue Pierre & Marie Curie 75005 Paris
09:30 10:00	Andreas VON DEIMLING University of Heidelberg - GE	Methylation profiling for diagnosing sarcomas (20 min talk + 10 min discussion)	
10:00 10:20	Didier SURDEZ Institut Curie - FR	Sarcoma PDX models in pediatric preclinical research (15 min talk + 5 min discussion)	
10:20 10:30	COFFEE BREAK		BDD Hall
10:30 11:00	Jeremy WHELAN UCLH - UK	European collaboration to improve outcomes for bone sarcomas - achievements and challenges (20min talk + 10 min discussion)	Amphithéâtre BDD
11:00 11:30	Perrine MAREC-BERARD IHOPe - FR	Ewing: how we have improved survival (20min talk + 10 min discussion)	
11:30 12:30	George DEMETRI DFCI HARVARD - USA	Precise and imprecise therapeutic targeting of sarcomas across the age spectrum	
12:30 14:00	LUNCH BREAK		BDD Hall
14:00 14:45	Maud TOULMONDE Institut Bergonié - FR	Immunotherapy in sarcomas (30min talk + 15 min discussion)	Amphithéâtre BDD
14:45 15:30	Joshua WATERFALL Institut Curie - FR	Tumor antigens in sarcoma (30min talk + 15 min discussion)	
16:00	Wrap up and Conclusion - End of the course		